



LORAWAN CONVERTER

# M-BUS-2

User Manual

## Document Information

Title	M-BUS-2 LoRaWAN converter
Document type	Manual - Translation from Russian
Document number	V02-MBUS2-01
Revision and date	08 – 03 February 2021

This document applies to the following products:

Product name	Type number
End devices	M-BUS-2

## Revision History

Revision	Date	Name	Comments
01	20.12.2017	KEV	Document creation date
02	06.04.2018	TII	Supported connected devices list, transparent mode is not supported, minor changes
03	10.08.2018	KEV	Changes in the device logic, frequency plans are added, changes in the communication protocol, in technical characteristics, new supported meters are added
04	06.11.2018	KEV	Typo in specification is fixed, list of supported heat meters is refreshed
05	01.07.2019	KEV	Changes in the <a href="#">communication protocol</a> , in <a href="#">specification</a> , <a href="#">settings by the air</a> described, added " <a href="#">Marking</a> " part, communication periods changed, device <a href="#">AppEui</a> changed
06	15.04.2020	KEV	We corrected the table with <a href="#">ID settings</a> and some minor changes
07	14.09.2020	KEV	Settings <a href="#">packet</a> type changed to 00, Landis Gir removed from the <a href="#">list</a> of supported devices
08	03.02.2021	KEV	The number of warranty packets is changed, we remove AppEui number from specification

# CONTENTS

INTRODUCTION .....	4
1 DESCRIPTION AND OPERATION .....	5
Device description .....	5
Communication and data collection algorithm .....	5
Functional .....	6
Marking .....	6
2 SPECIFICATION .....	7
3 OPERATION .....	8
Contacts .....	8
Initial startup .....	9
Converter operation in the independent poll mode of the metering devices .....	10
Connecting via USB .....	11
4 VEGA LORAWAN CONFIGURATOR .....	13
Interface of the application .....	13
Connection to the device .....	14
"Device info" tab .....	15
"LoRaWAN settings" tab .....	17
«MBUS-2» TAB .....	21
5 COMMUNICATION PROTOCOL .....	23
Converter M-BUS-2 transmits the following types of packets .....	23
Converter M-BUS-2 receives packets of the following types .....	25
6 STORAGE AND TRANSPORTATION REQUIREMENTS .....	27
7 CONTENT OF THE PACKAGE .....	28
8 WARRANTY .....	29

## INTRODUCTION

This manual is designated for M-BUS-2 device (hereinafter – device, converter) manufactured by Vega-Absolute OOO and provides information on powering and activation procedure, control commands and functions of the device.

This manual is targeted at specialists familiar with installation work fundamentals for electronic and electrical equipment.



**To provide the stable radio between the gateway and the end device it is recommend avoiding the device installation in the places which are barriers for the radio signal getting through like a reinforced floors and walls, a basement, an underground facilities and wells, a metal case etc. The necessary stage for the network deploying including a big quantity of end devices is a radio planning work with nature experiments**

Vega-Absolute OOO reserves the right to make changes to the manual related to the improvement of equipment and software, as well as to eliminate typos and inaccuracies, without prior notice.

# 1 DESCRIPTION AND OPERATION

## DEVICE DESCRIPTION

The device M-BUS-2 is designed for reading of values from metering instruments via M-BUS interface and further accumulating and transmitting of this data to the LoRaWAN network.

Converter M-BUS-2 can be used for any utilities' meters and industrial equipment with M-BUS interface including water-, electricity-, and heat meters. M-BUS-2 may operate in the independent poll mode of some metering devices. Supported devices list:

- Heat meter «Teplouchet-1»
- Heat meter «STE 21 «Berill»
- Heat meter «Danfoss Sonometer 500»
- Heat meter «ELF-M Teplovodomer»
- Heat meter «WESER Heat Meter»
- Heat meter «Kamstrup Multical 801»
- Heat meter «Kamstrup Multical 402»

The converter is powered by a 6400 mAh built-in battery.



**For the correct functioning of the converter in the independent poll mode, it is recommended to connect one-model counting devices to one converter**

**If you simultaneously use different models of metering devices with a single converter, the correct functioning of the converter is not guaranteed**

## COMUNICATION AND DATA COLLECTION ALGORITHM

The readings collecting from the meter with a configurable period from 5 minutes to 24 hours. The readings stored in the device memory and transmitting during the next communication session with the LoRaWAN network.

The adjustable data transfer period can be from 5 minutes to 24 hours. Data transferring in random point in time during set period. At the next communication session, the device starts sending accumulated packets with readings, from the earliest to the latest.

With the "Confirmed uplinks" option turned on, the device will send the next packet only after receiving a confirmation of the delivery of the previous one. If such confirmation has not received after the fulfilled in the settings uplink number of transmissions, device completes the communication session until the next one according to the schedule. In this case, the device continues to collect data according to the data collection period and store it in memory. Non-transmitted packets remain in the device memory until the next communication session.

With the "Confirmed uplinks" option turned off, the device just sends all accumulated packets to the network in order from the earliest to the latest. There are no checks of package delivery in this mode. There are no non-transmitted messages in the device memory.

The internal clock is set automatically when device connected to the "Vega LoRaWAN Configurator" via USB, also adjustable via LoRaWAN.

## FUNCTIONAL

M-BUS-2 converter is A class device (LoRaWAN classification) and has the following features:

- ADR support (Adaptive Data Rate)
- Sending of confirmed packets (configurable)
- Temperature measurement by the internal temperature sensor
- Charge measuring of the built-in battery (%)

## MARKING

Device marked with sticker that contain the next information:

- Device model;
- DevEUI;
- Month and year of manufacture;
- QR-code containing DevEUI for automatized count.

Sticker located in three places – on device case, in factory certificate and on the packing box.

Besides, there is an additional sticker located on the packing box and contains:

- Information about firmware version;
- QR-code containing DevEUI and keys for device registration in network via OTAA method.

## 2 SPECIFICATION

### Main

M-BUS interface	1
Quantity of connecting M-BUS devices	up to 10
USB-port	mini-USB, type B
Operating temperatures	-40...+85 °C

### LoRaWAN

LoRaWAN class	A
Quantity of LoRa channels	16
Frequency plan	RU868, EU868, IN865, AS923, AU915, KR920, US915, KZ865, custom (EU868 based)
Activation type	ABP or OTAA
Communication period	5, 15, 30 minutes, 1, 6, 12 or 24 hours
Data collection period	5, 15, 30 minutes, 1, 6, 12 or 24 hours
Memory amount for storing packets	50 packets
Antenna connector	SMA
Sensitivity	-138 dBm
Radio coverage in restrained urban conditions	max 5 km
Radio coverage within line of sight	max 15 km
Transmitter power by default	25 mW (configurable)
Maximum transmitter power	100 mW

### Power

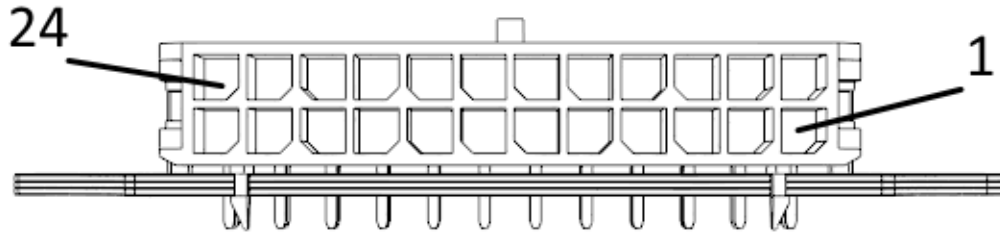
Built-in battery	6400 mAh
Warranty number of packets sent by the device, not less	10 000

### Case

Housing dimensions	102 x 95 x 28 mm
Ingress protection rating	IP54
Mounting	with screws

## 3 OPERATION

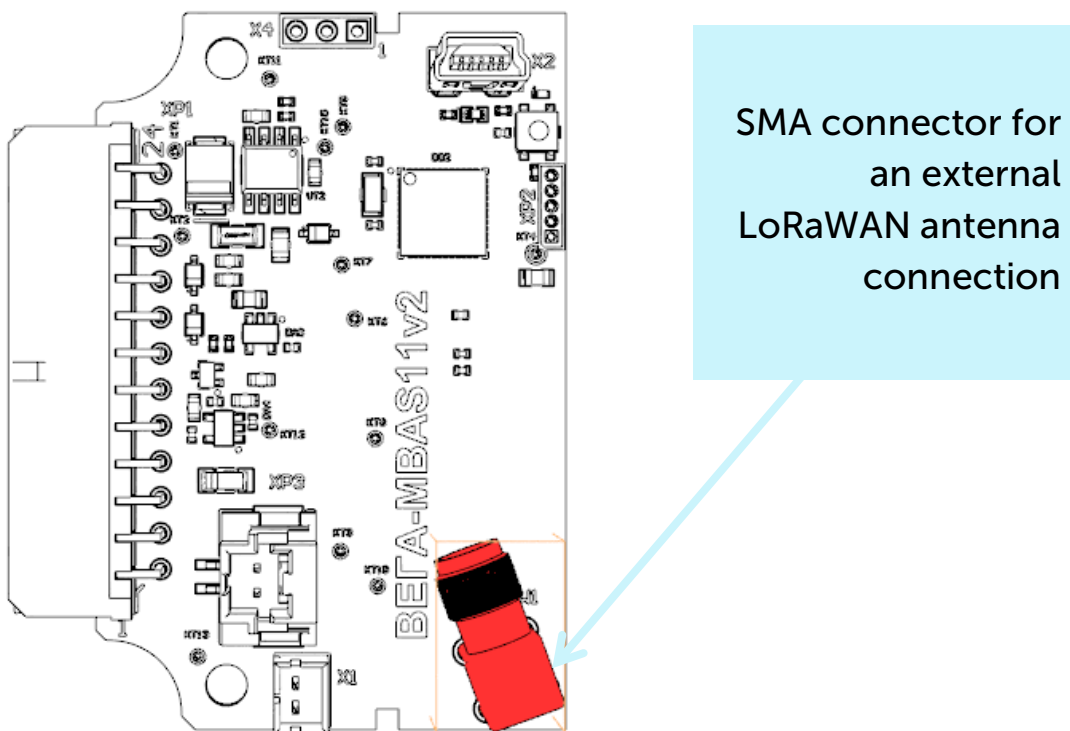
### CONTACTS



Converter has 12 contact pairs which are M-BUS interfaces. Converter provide connection up to 10 M-BUS devices. You can choose any 10 contact pairs. Wherein 1-2 contacts are M-BUS- (bot row), and 13-24 contacts are M-BUS+ (top row).

In order to increase the battery life, the physical level of the M-BUS interface is switch on (supply voltage is applied to the outputs MBAS +, MBAS-) just before meter polling with a programmable delay (the delay value is depends on the type of connected meter). The delay is introduced for initializing own meter interface and its preparing for receiving data from the converter. When the polling is complete, the physical M-BUS level is turned off.

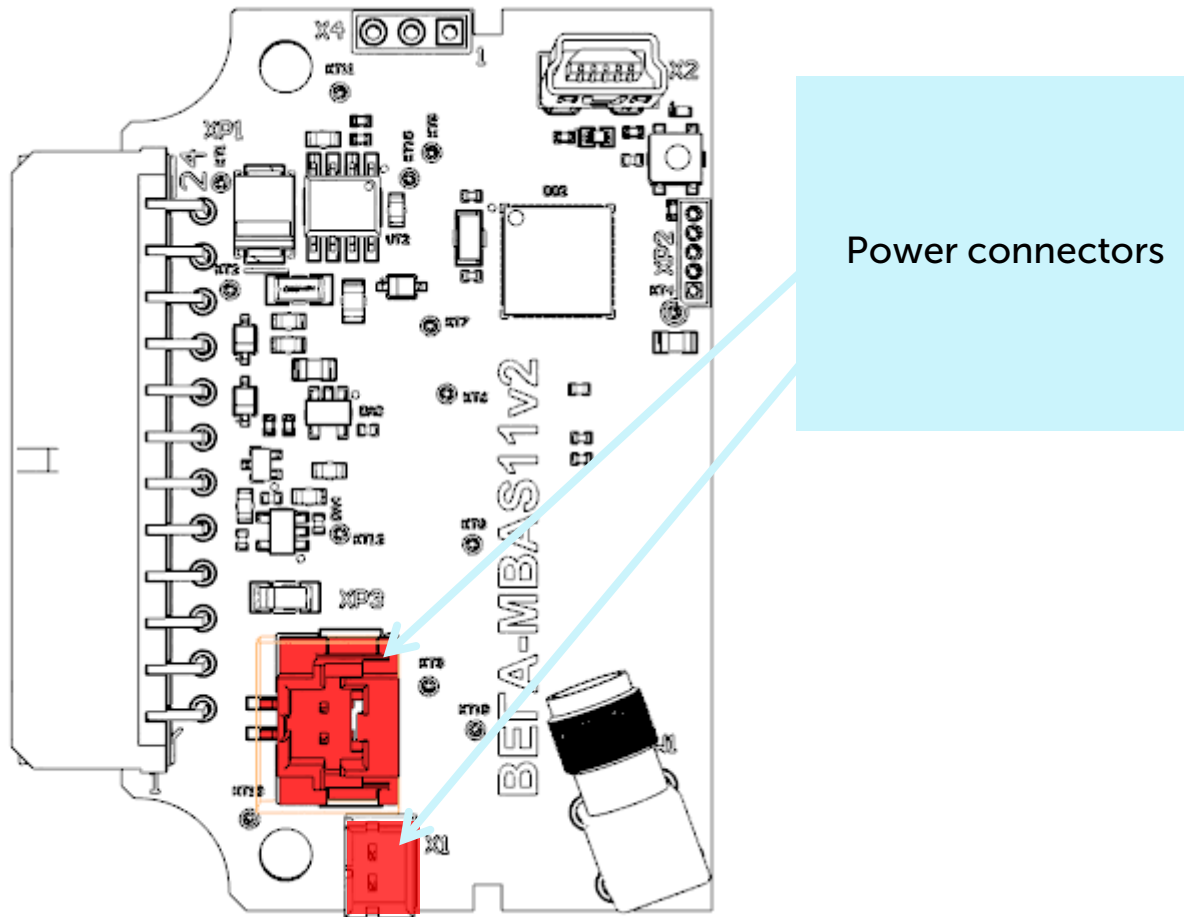
There is SMA connector for an external antenna connection on the board.





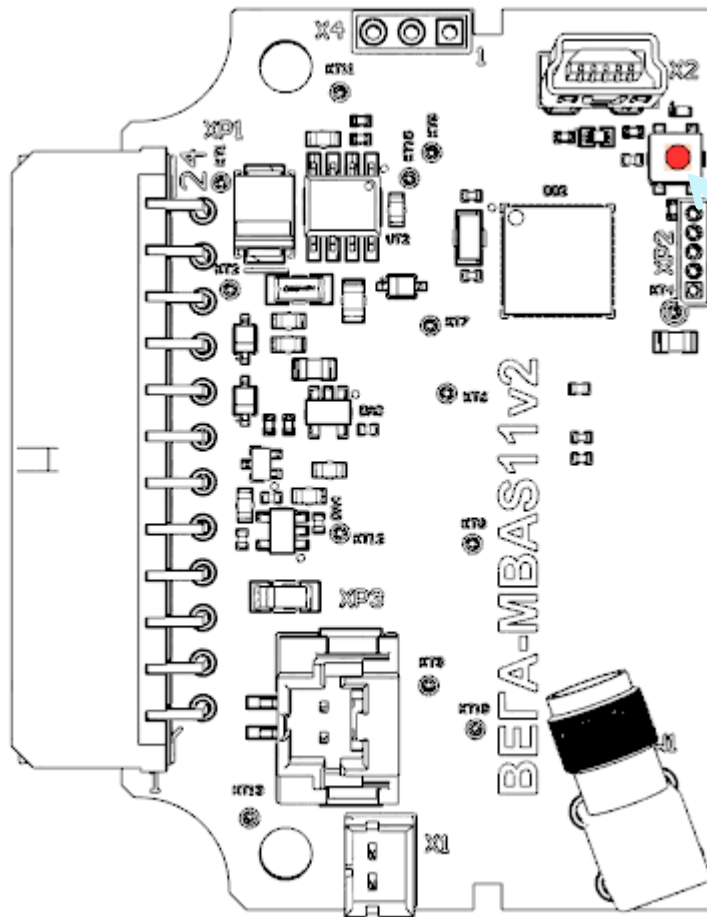
## INITIAL STARTUP

The M-BUS-2 converter is powered from the built-in battery. In case of disconnect battery, you need to connect the battery to the one of the two power connectors on the board.



The converter supports two activation methods in the LoRaWAN network - ABP and OTAA. Select one of the methods using "Vega LoRaWAN Configurator" application (See part 4).

1. **ABP.** After pressing the start button, the device immediately starts working in the "Active" mode.



Press the start button located on the board

**2. OTAA.** After pressing the start button, the device makes three attempts to connect to the network within the set frequency plan. After the activation in the LoRaWAN network is confirmed, the device sends a signal (LED flashing for 5 seconds) and switches to the "Active" mode. If all attempts fail, the converter will continue to accumulate data and will attempt to connect to the network every 6 hours.

To transfer the device from the "Active" mode to the "Storage" mode, you can use the long press of the start button (more than 5 seconds).



**Before connecting the device to the network, make sure that its registration data is entered in the network - Device EUI, Application EUI and Application Key for OTAA, or Device address, Application session key and Network session key for ABP**

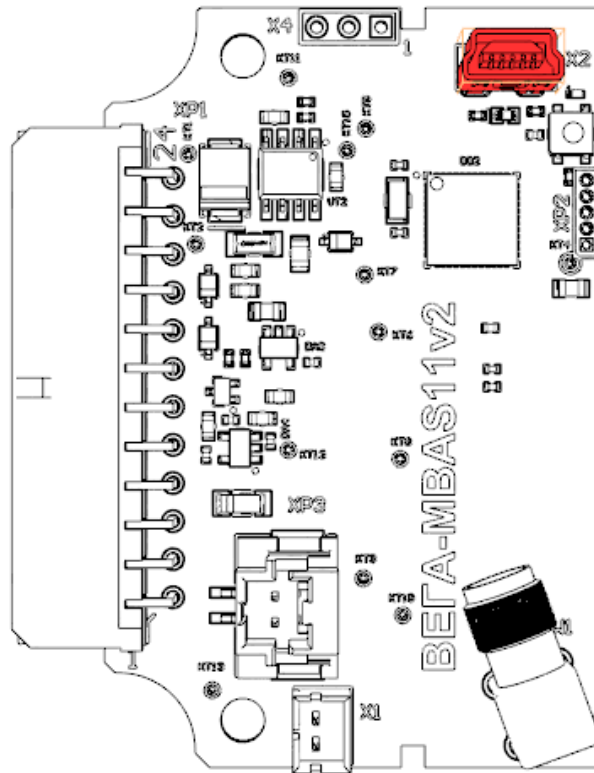
## CONVERTER OPERATION IN THE INDEPENDENT POLL MODE OF THE METERING DEVICES

In the independent poll mode, the converter periodically and consistently polls the metering devices at their secondary addresses. The addresses of the polling devices are writing to the converter using the "Vega LoRaWAN Configurator" application. In case of a successful poll, the data transferred by the metering device is accumulated in the configurator memory

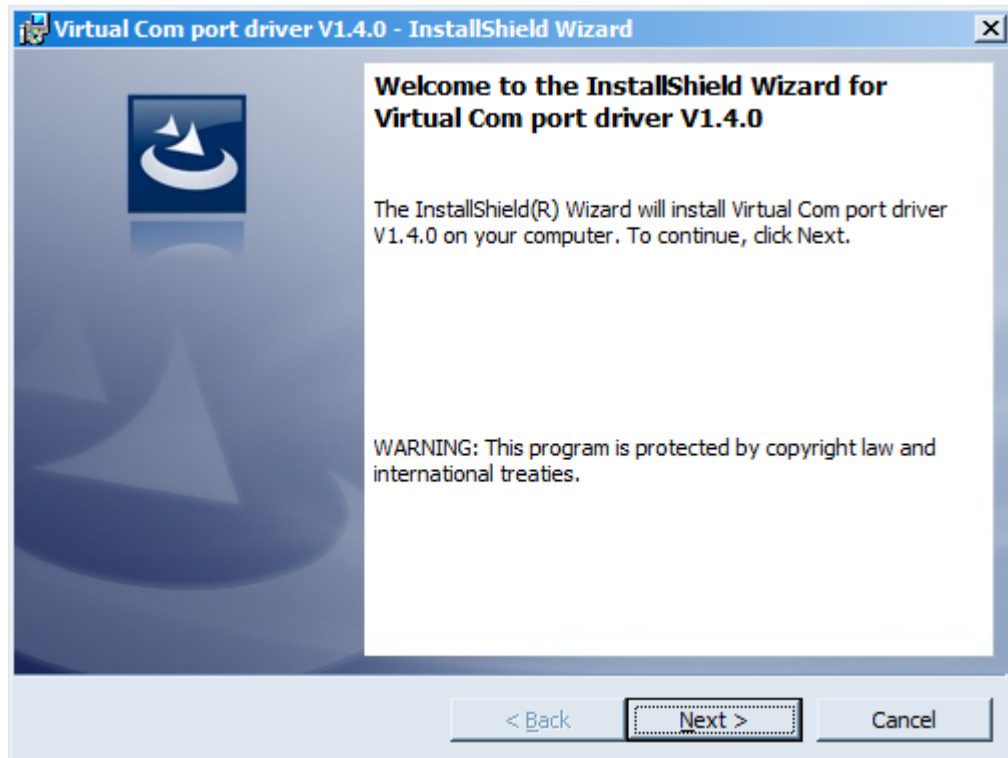
and sent to the LoRaWAN network in accordance with communication period. The communication period can be set to 1, 6, 12 or 24 hours in the "Vega LoRaWAN Configurator" application while converter connected to a computer.

## CONNECTING VIA USB

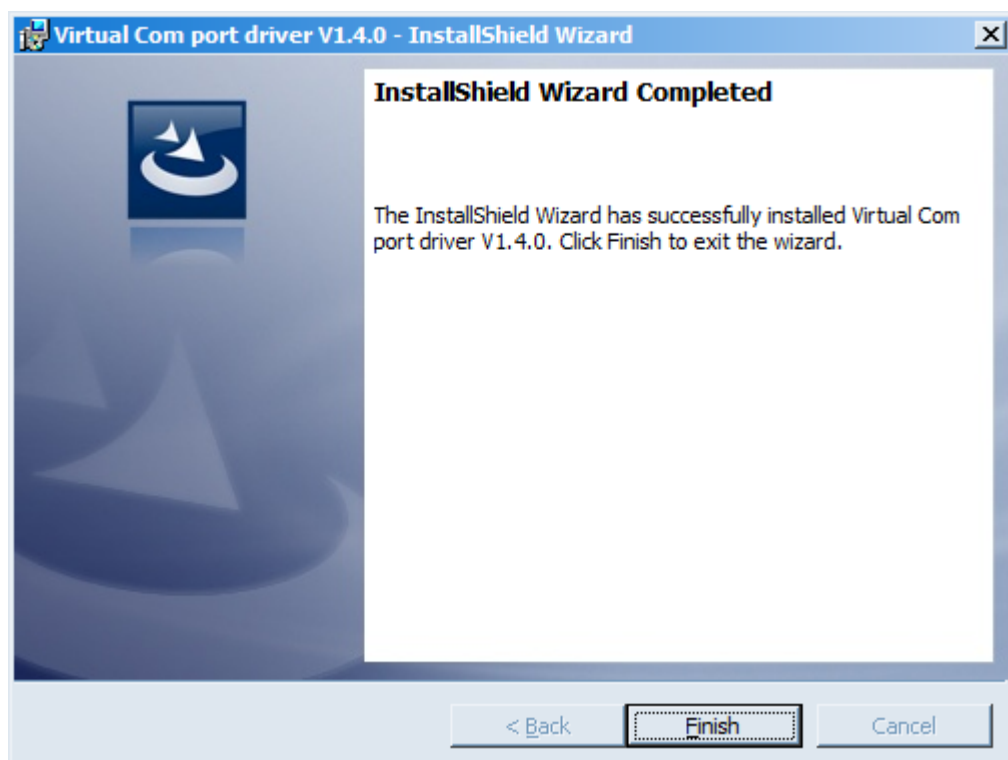
The device M-BUS-2 adjusted with the "Vega LoRaWAN Configurator" application (See part 4).



Before connecting the device to the computer for the first time, you must install the driver for the COM port **stsw-stm32102**, which can be downloaded from [iotvega.com](http://iotvega.com). After running the executable file **VCP\_V1.4.0\_Setup.exe**, the installer window will appear:



In this window, you need to click **Next**, then **Install**, and then the installation will begin. When the installation is completed successfully, the following screen appears:



After pressing **Finish** the driver is ready for operation, - it is possible to connect the converter via USB.

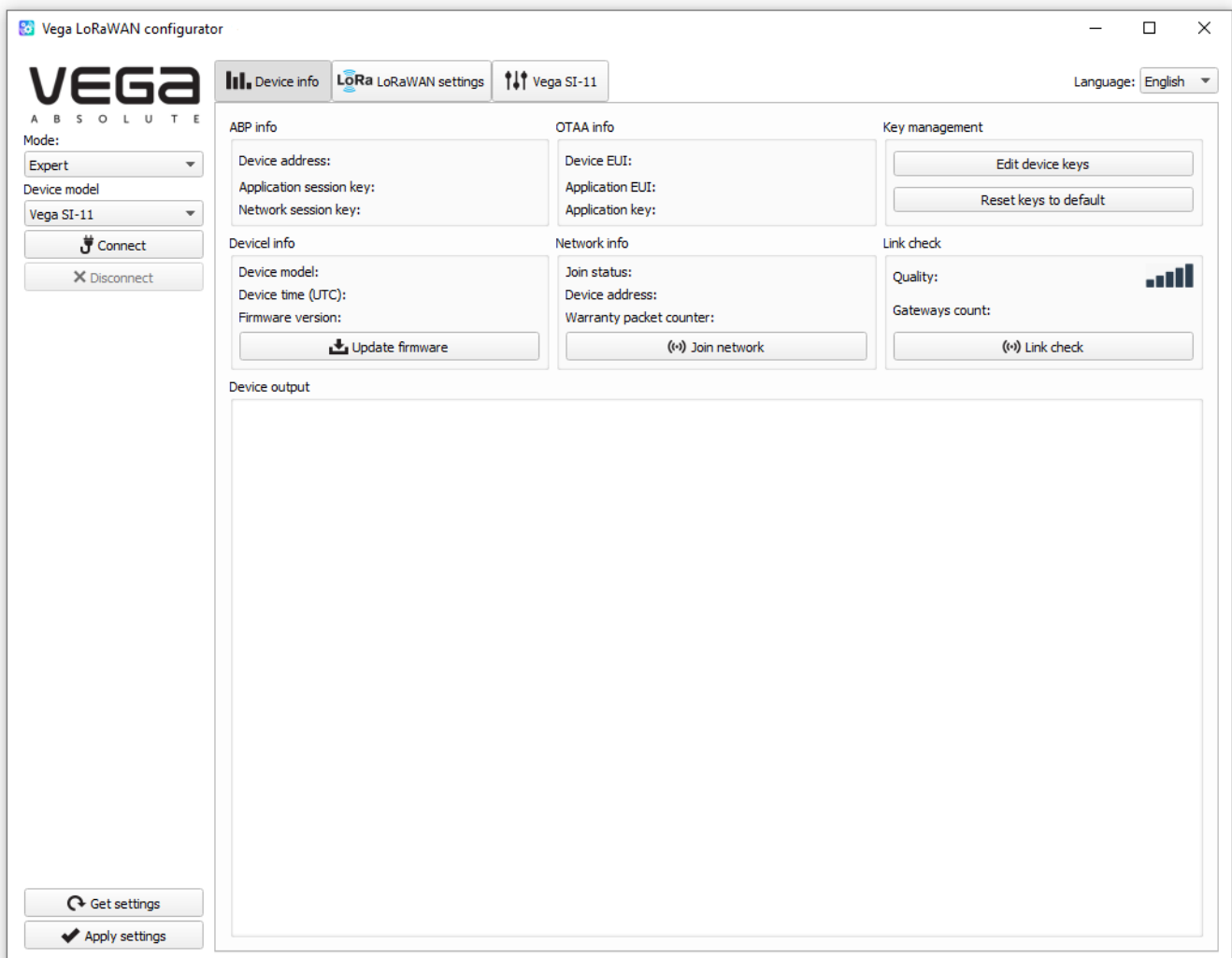
## 4 VEGA LORAWAN CONFIGURATOR

The "Vega LoRaWAN Configurator" application (hereinafter referred to as the configurator) is intended for setting up the device via USB.

The configurator has two modes of operation - "Simple" and "Expert". In the "Simple" mode, only basic settings are available. In the "Expert" mode, the basic settings, advanced settings and the ability to check the coverage area of the signal from the gateways are available. Next, the work of the application is considered in the "Expert" mode.

### INTERFACE OF THE APPLICATION

The "Vega LoRaWAN Configurator" application does not require the special installation. When the executable file is launched, the window for working with the application appears.



The menu on the left allows you to switch between the "Simple" and "Expert" modes, select the device model, connect to the device or disconnect from it, get and apply settings.

The application window contains three tabs – Device info, LoRaWAN settings and device settings.

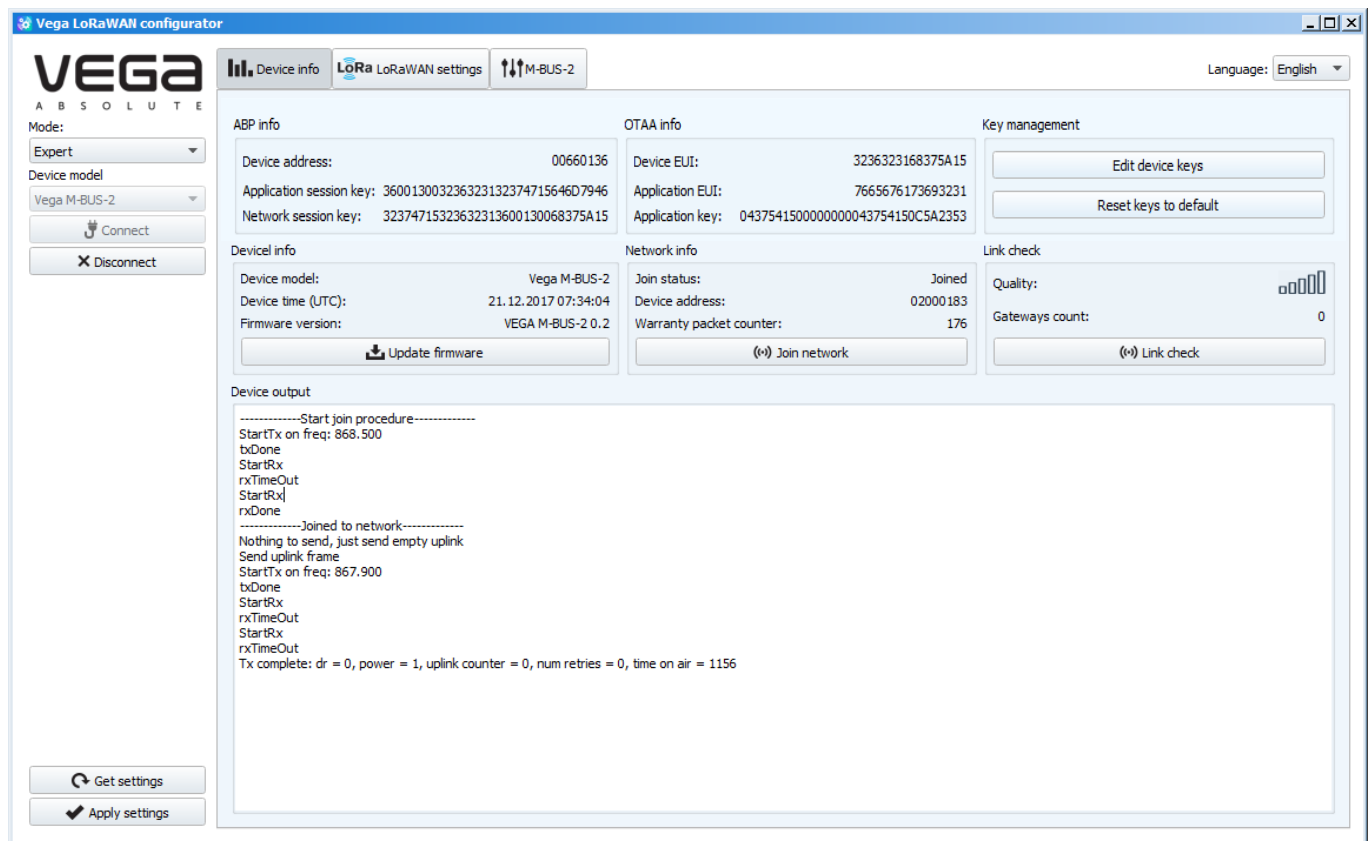
The language selection menu is in the upper right corner.

## CONNECTION TO THE DEVICE

For the connection to the device, perform the following steps:

1. Connect the USB cable to the device.
2. Start the "Vega LoRaWAN Configurator" application.
3. Click the "Connect" button in the menu on the left.

The application automatically recognizes the device model, and the device selection menu becomes inactive.

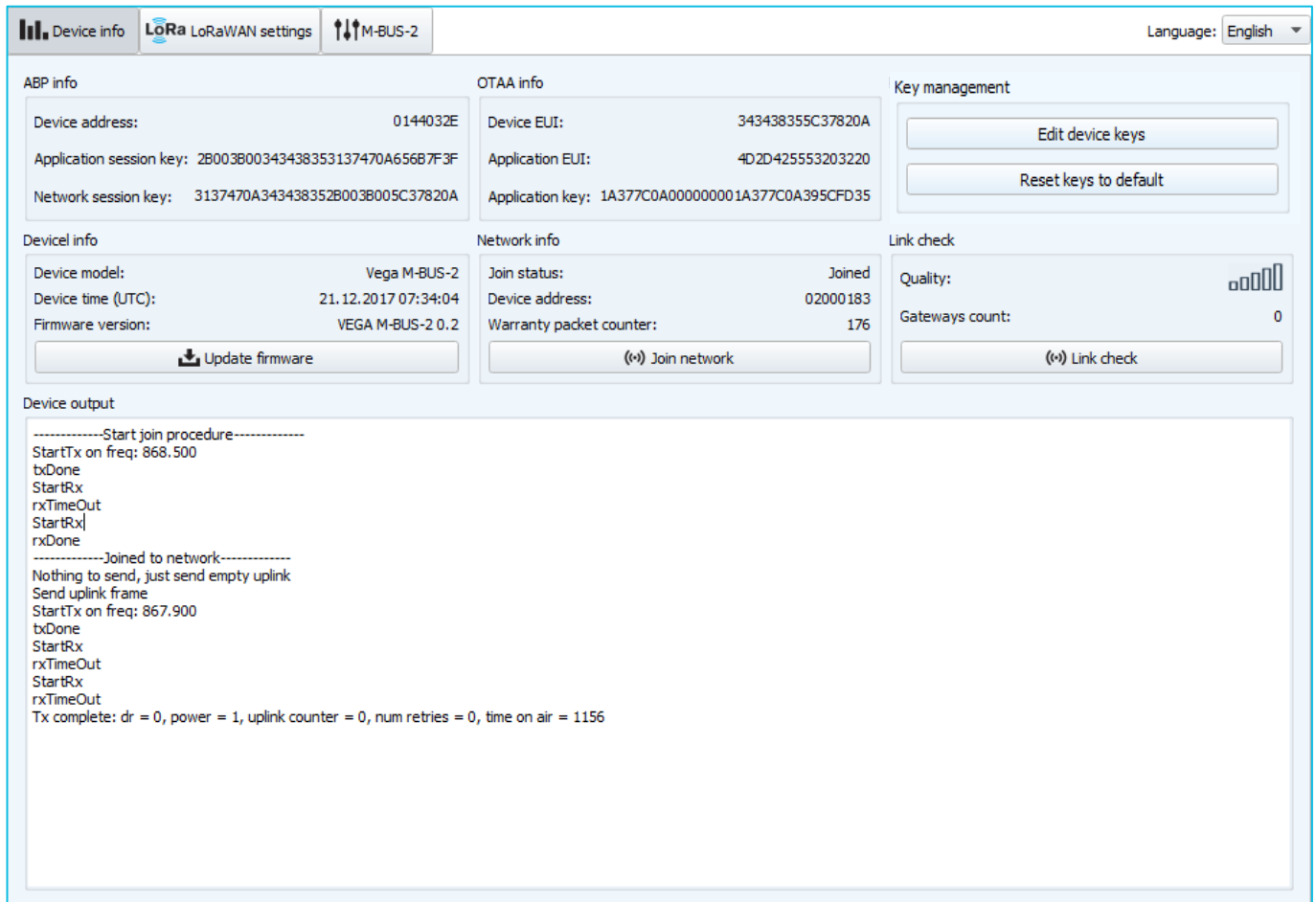


To read the settings from the device, you need to click the "Get settings" button, until this point the application will display the default settings or from the last connected device.

After making the necessary changes to the settings, you should click the "Apply settings" button and only then disconnect from the device with the "Disconnect" button.

## "DEVICE INFO" TAB

The "Device info" tab displays information about the device, its current status, and also the data needed to register the device in the LoRaWAN network.



The screenshot shows the "DEVICE INFO" tab with the following sections:

- ABP info:**
  - Device address: 0144032E
  - Application session key: 2B003B00343438353137470A656B7F3F
  - Network session key: 3137470A343438352B003B005C37820A
- OTAA info:**
  - Device EUI: 343438355C37820A
  - Application EUI: 4D2D425553203220
  - Application key: 1A377C0A000000001A377C0A395CFD35
- Key management:**
  - Edit device keys
  - Reset keys to default
- Device info:**
  - Device model: Vega M-BUS-2
  - Device time (UTC): 21.12.2017 07:34:04
  - Firmware version: VEGA M-BUS-2 0.2
  - Update firmware
- Network info:**
  - Join status: Joined
  - Device address: 02000183
  - Warranty packet counter: 176
  - Join network
- Link check:**
  - Quality: [Signal strength indicator]
  - Gateways count: 0
  - Link check
- Device output:**

```

-----Start join procedure-----
StartTx on freq: 868.500
txDone
StartRx
rxTimeOut
StartRx
rxDone
-----Joined to network-----
Nothing to send, just send empty uplink
Send uplink frame
StartTx on freq: 867.900
txDone
StartRx
rxTimeOut
StartRx
rxTimeOut
Tx complete: dr = 0, power = 1, uplink counter = 0, num retries = 0, time on air = 1156

```

**ABP info** - displays the data necessary to register the device in the LoRaWAN network with ABP method (Activation By Personalization).

**OTAA info** - the data required to register the device in the LoRaWAN network with OTAA method (Over The Air Activation) is displayed.

**Key management** (not displayed in the "Simple" mode) - allows you to change the factory keys to register the device on the network and reset the keys back to the factory settings.

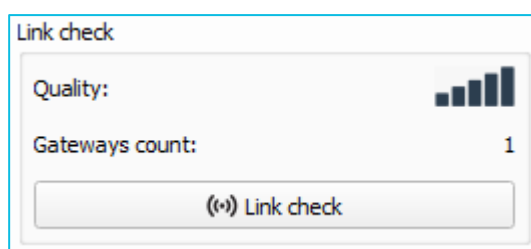
**Device info** - the configurator reads information about the device model, its firmware and automatically corrects the device's time when connected to it.

**Update firmware** - allows you to select the firmware file from your computer's hard drive and load it into the device. The device will automatically disconnect from the configurator when the download is complete. The current version of the device firmware can be downloaded from [iotvega.com](http://iotvega.com).

**Network info** - shows whether the device is connected to the LoRaWAN network and its network address.

**Join network button** - launch the LoRaWAN network connection procedure with the previously selected ABP or OTAA method. If the device is already connected to the network, reconnection procedure will occur.

**Link check** (not displayed in the "Simple" mode) - when pressed, the device sends a special signal to the LoRaWAN network, in response to which the network informs it of the number of gateways that received this signal and the signal quality. This button only works when the device is connected to the network.

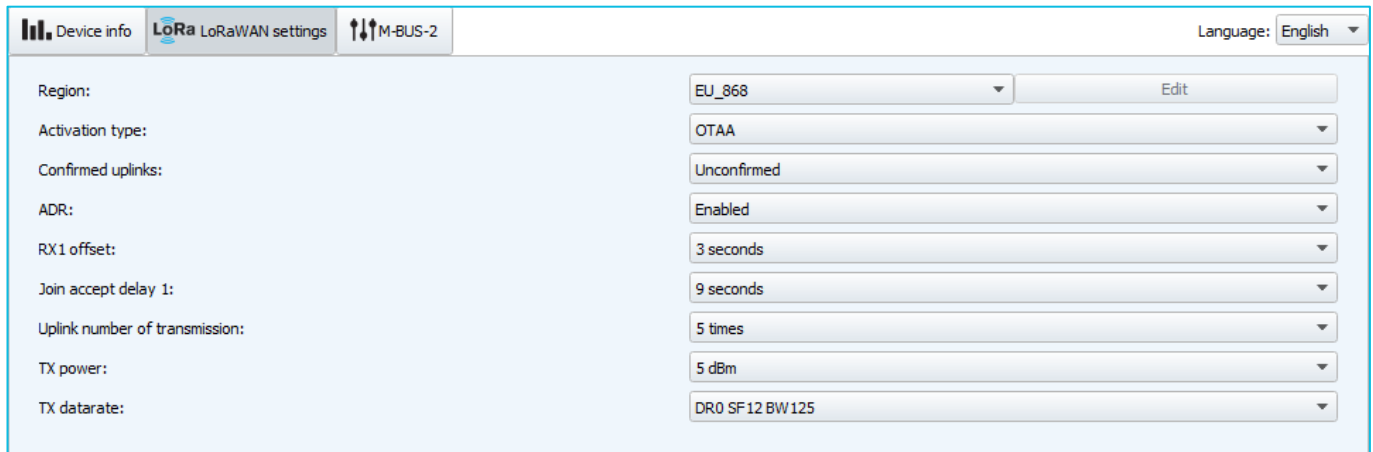


**Device output** (not displayed in the "Simple" mode) - monitoring the device status, all events in real time are displayed.

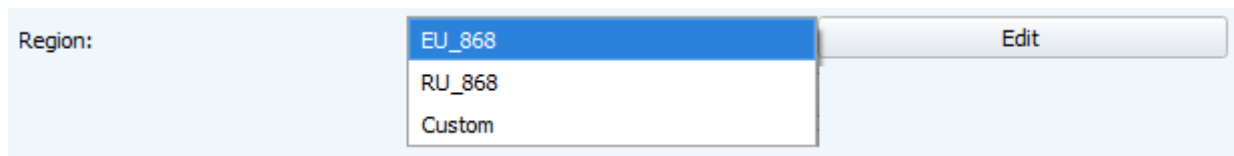


## "LORAWAN SETTINGS" TAB

The "LoRaWAN Settings" tab allows you to configure various parameters of the LoRa network.



**Region** - allows you to select one of installed frequency plans or specify a custom frequency plan. Custom frequency plan is EU-868 based.



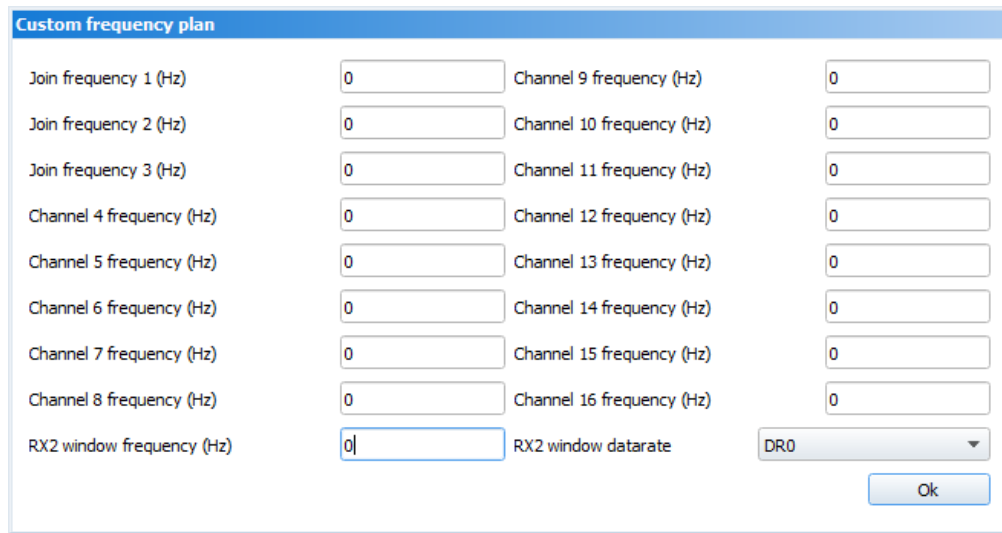
The converter supports the following frequency plans:

Frequency plan <sup>1</sup>	Channel	Frequency	Modulation
EU-868	1	868.1	MultiSF 125 kHz
	2	868.3	MultiSF 125 kHz
	3	868.5	MultiSF 125 kHz
	RX2	869.525	SF12 125 kHz
RU-868	1	868.9	MultiSF 125 kHz
	2	869.1	MultiSF 125 kHz
	RX2	869.1	MultiSF 125 kHz
Custom	Set with «Vega LoRaWAN Configurator» application		

In the EU\_868 and RU\_868 frequency plans, only those channels are active by default, on which sending requests for connection to the network (join channels). The remaining channels (that the device should use) can be transferring by the LoRaWAN network server during the device activation procedure (only OTAA).

<sup>1</sup> By default, the device supports two frequency plans and the custom, but it is possible to order firmware for other frequency plans: IN865, AS923, AU915, KR920, US915, KZ865

If you select "Custom" in the "Region" field, you must manually specify the frequencies that the device will use. To do this, click the "Edit" button, the channel frequency editing window will appear:



The "Custom frequency plan" window contains the following fields:

Field	Value	Field	Value
Join frequency 1 (Hz)	0	Channel 9 frequency (Hz)	0
Join frequency 2 (Hz)	0	Channel 10 frequency (Hz)	0
Join frequency 3 (Hz)	0	Channel 11 frequency (Hz)	0
Channel 4 frequency (Hz)	0	Channel 12 frequency (Hz)	0
Channel 5 frequency (Hz)	0	Channel 13 frequency (Hz)	0
Channel 6 frequency (Hz)	0	Channel 14 frequency (Hz)	0
Channel 7 frequency (Hz)	0	Channel 15 frequency (Hz)	0
Channel 8 frequency (Hz)	0	Channel 16 frequency (Hz)	0
RX2 window frequency (Hz)	0	RX2 window datarate	DR0

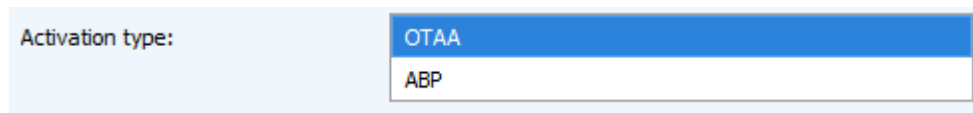
An "Ok" button is located at the bottom right.

This frequency plan allows you to set up to 16 channels, as well as the frequency and speed of the second receiving window.



**The first three channels and the second receiving window parameters are mandatory. Without these parameters the custom frequency plan will be considered empty**

**Activation type** – selecting ABP or OTAA device activation method.

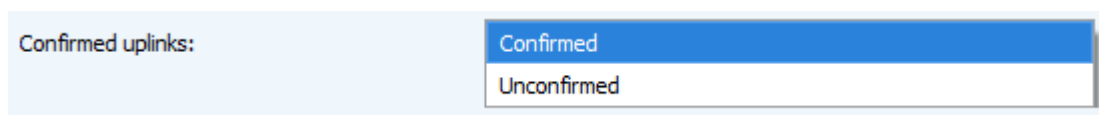


The "Activation type" dropdown menu shows "OTAA" selected and "ABP" as an option.

**Confirmed uplinks** – when you choose "confirmed", the device will retry sending the packet until it receives the server confirmation, or until the "Uplink number of transmission" is over (see below).



**If you choose to send a packet without confirmation, the modem will not know whether the packet is delivered or not**



The "Confirmed uplinks" dropdown menu shows "Confirmed" selected and "Unconfirmed" as an option.

**ADR** – this option activates the Adaptive Data Rate algorithm for automatic control of the data transfer rate from the LoRaWAN network server side. The higher the quality of the signal received by the network, the higher the speed will be installed on the device. This option is recommended only on permanently installed devices.

ADR:	Enabled
	Disabled

**RX1 offset** (not displayed in the "Simple" mode) – specifies the time between end of packet transmission and first receiving window opening. The second receiving window always opens after 1 second after the first.

RX1 offset:	1 second
	2 seconds
	3 seconds
	4 seconds
	5 seconds
	6 seconds
	7 seconds
	8 seconds
	9 seconds
	10 seconds
	11 seconds
	12 seconds
	13 seconds
	14 seconds
	15 seconds

**Join accept delay 1** (not displayed in the "Simple" mode) – sets the time that the device will open the first receiving window to receive confirmation for the join request from the LoRaWAN network. The second window always opens after 1 second after the first.

Join accept delay 1:	1 second
	2 seconds
	3 seconds
	4 seconds
	5 seconds
	6 seconds
	7 seconds
	8 seconds
	9 seconds
	10 seconds
	11 seconds
	12 seconds
	13 seconds
	14 seconds
	15 seconds

**Uplink number of transmission** (not displayed in the "Simple" mode) – if the "Confirmed uplinks" function is disabled, the device will simply send each packet as many times as specified in this option. If "Confirmed uplinks" is enabled, the device will send packets until it receives a confirmation or until it sends as many packets as specified in this option.

Uplink number of transmission:

1 time  
2 times  
3 times  
4 times  
5 times  
6 times  
7 times  
8 times  
9 times  
10 times  
11 times  
12 times  
13 times  
14 times  
15 times

**TX power** (not displayed in the "Simple" mode) – the device RF transmitter power is adjusted to this value when sending packets to the LoRaWAN network. This option can be changed by the network server.

TX power:

2 dBm  
5 dBm  
8 dBm  
11 dBm  
14 dBm  
20 dBm

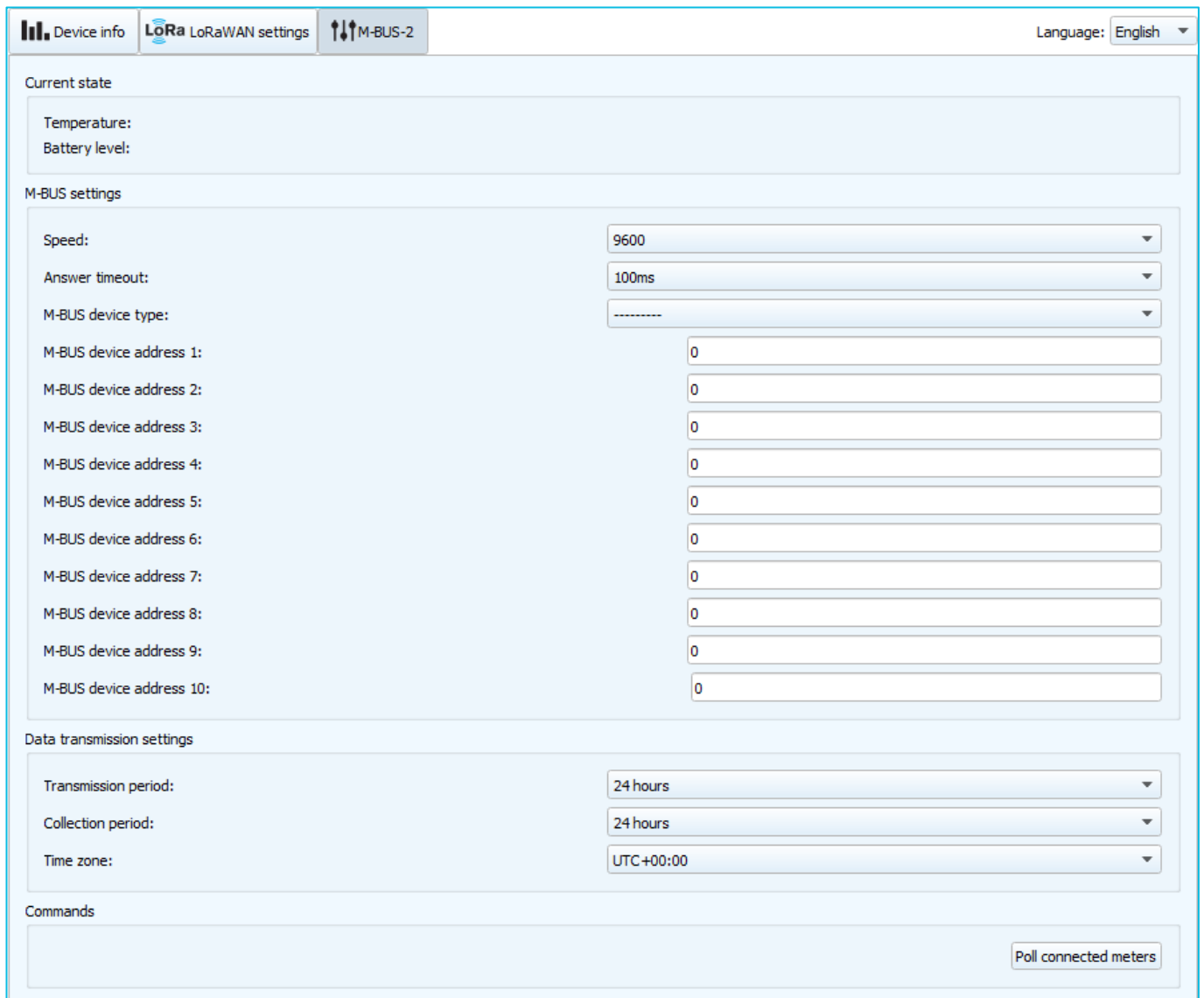
**TX datarate** (not displayed in the "Simple" mode) – the device transmission datarate at which it will transfer packets to the LoRaWAN network. This speed can be changed by the network server if the ADR algorithm is enabled.

TX datarate:

DR0 SF12 BW125  
DR1 SF11 BW125  
DR2 SF10 BW125  
DR3 SF9 BW125  
DR4 SF8 BW125  
DR5 SF7 BW125

## «MBUS-2» TAB

The “MBUS-2” tab contains the settings of the connected device.



The screenshot shows the 'MBUS-2' configuration tab in a web interface. At the top, there are three tabs: 'Device info', 'LoRa LoRaWAN settings', and 'M-BUS-2' (which is selected). A language dropdown menu is set to 'English'. The interface is divided into three main sections: 'Current state', 'M-BUS settings', and 'Data transmission settings'. The 'Current state' section shows 'Temperature:' and 'Battery level:' with empty input fields. The 'M-BUS settings' section includes 'Speed:' (9600), 'Answer timeout:' (100ms), 'M-BUS device type:' (a dropdown menu), and ten 'M-BUS device address' fields (1-10), all currently set to '0'. The 'Data transmission settings' section includes 'Transmission period:' (24 hours), 'Collection period:' (24 hours), and 'Time zone:' (UTC+00:00). At the bottom, there is a 'Commands' section with a text input field and a 'Poll connected meters' button.

**Current state** – displays the current parameters of the device - the internal temperature of the device and the battery level.

**M-BUS settings** – allows to setting M-BUS interface, set the model and addresses of connected heat meters. M-BUS-1 uses the secondary addresses for poll of the connected devices. The secondary address usually is equal to meter serial number.

**Data transmission settings** – a group of parameters that allows you to configure the collection and transmission periods, and the time zone for the internal clock of the device will be set which. The readings are read from the connected device at 00.00 on the internal clock of the device if the data collection period is set to 24 hours, at 00.00 and at 12.00, if the period is 12 hours and so on. All readings are stored in the device memory until the next communication session.

The data transfer period can be adjusted from 5 minutes to 24 hours. Data transfer is carried out by a random time at the selected period. At the next communication session, the device starts sending accumulated packets with readings, from the earliest to the latest.

With the "Confirmed uplinks" option turned on, the device will send the next packet only after receiving a confirmation of the delivery of the previous one. If such confirmation has not received after the fulfilled in the settings uplink number of transmissions, device completes the communication session until the next one according to the schedule. In this case, the device continues to collect data according to the data collection period and store it in memory. Non-transmitted packets remain in the device memory until the next communication session.

With the "Confirmed uplinks" option turned off, the device just sends all accumulated packets to the network in order from the earliest to the latest. There are no checks of package delivery in this mode. There are no non-transmitted messages in the device memory.

**Commands** – allows transferring the command "Poll connected meters" on the converter. The converter polls all the connected devices and transfers that data in the LoRaWAN network just after button pressing.

## 5 COMMUNICATION PROTOCOL

This part describes the M-BUS-2 data exchange protocol with LoRaWAN network.



**In fields consisting of several bytes, the little-endian byte order is used**

### CONVERTER M-BUS-2 TRANSMITS THE FOLLOWING TYPES OF PACKETS

1. Packet with current readings from connected heat meter, sent regularly or on request

Size in bytes	Field description	Data type
1 byte	Packet type, this packet = 1	uint8
1 byte	Battery level, %	uint8
1 byte	Values of basic settings (bit field)	uint8
4 bytes	Meter secondary address	uint32
4 bytes	Time of readings in this packet (unixtime UTC), by the internal clock of the converter	uint32
4 bytes	The amount of thermal energy consumed, Wh	uint32
4 bytes	Total volume of coolant, l	uint32
4 bytes	Operating time, h	uint32
2 bytes	Current flow temperature °C*100	uint16
2 bytes	Current temperature in the return line °C*100	uint16
2 bytes	Current flow of coolant, l/h	uint16

The converter has internal clock and calendar; time and date is factory set. When sending a packet with the current readings, the device uses the data taken at the nearest time, which is multiple to the interval, set by the switches:

- 1 hour period: the readings of the beginning of the current hour are sent;
- 6 hours period: 00:00, 06:00, 12:00, 18:00 readings are sent;
- 12 hours period: 00:00, 12:00 readings are sent;
- 24 hours period: the readings of 00:00 of the current day are sent.

When transmitting on request the readings are taken in that moment.

A package of this type is transmitted separately for each connected meter. For example, if 5 metering devices are connected to the converter, 5 packets will be transferred to the next connection.

"Values of basic settings" bit field decoding

Bits	Field description
0 bit	Activation type 0 - OTAA, 1 – ABP
1 bit	Query for packet confirmation 0 – off, 1 – on
2,3,4 bit	Communication period:

|1 == 0|2==0|3==0| - 5 minutes  
 |1 == 1|2==0|3==0| - 15 minutes  
 |1 == 0|2==1|3==0| - 30 minutes  
 |1 == 1|2==1|3==0| - 1 hour  
 |1 == 0|2==0|3==1| - 6 hours  
 |1 == 1|2==0|3==1| - 12 hours  
 |1 == 0|2==1|3==1| - 24 hours

5 bit	reserve
6 bit	reserve
7 bit	reserve

2. Packet with time correction request, sent every seven days on LoRaWAN port 4

Size in bytes	Field description	Data type
1 byte	Packet type, this packet == 255	uint8
4 bytes	Time of the modem at a moment of the packet transmission (unixtime UTC)	uint16

After receiving this type of package, the application can send to modem the packet with time correction.

3. Settings packet – transmitting on LoRaWAN port 3 when settings request command received, or device connected to the network

Size in bytes	Field description	Data type
1 byte	Packet type, this packet == 00	uint8
2 bytes	ID of parameter	uint16
1 byte	Data length (len)	uint8
len bytes	Parameter value	-----
2 bytes	ID of parameter	uint16
1 byte	Data length (len)	uint8
len bytes	Parameter value	-----
...	...	...
2 bytes	ID of parameter	uint16
1 byte	Data length (len)	uint8
len bytes	Parameter value	-----



## CONVERTER M-BUS-2 RECEIVES PACKETS OF THE FOLLOWING TYPES

1. Real-time clock adjustment – send by application on LoRaWAN port 4

Size in bytes	Field description	Data type
1 byte	Packet type, this packet = 255	uint8
8 bytes	The value in seconds for which you need to adjust the time. Can be positive or negative	int64

2. Packet with request of settings – sent by application on LoRaWAN port 3

Size in bytes	Field description	Data type
1 byte	Packet type, this packet == 1	uint8

Answering that packet, the device sends the packet with settings.

3. Packet with settings is identical to such packet from device

Size in bytes	Field description	Data type
1 byte	Packet type, this packet == 00	uint8
2 bytes	ID of parameter	uint16
1 byte	Data length (len)	uint8
len bytes	Parameter value	-----
2 bytes	ID of parameter	uint16
1 byte	Data length (len)	uint8
len bytes	Parameter value	-----
...	...	...
2 bytes	ID of parameter	uint16
1 byte	Data length (len)	uint8
len bytes	Parameter value	-----

The package with settings sent to the device may not contain all the settings supported by the device, but only the part that needs to be changed.

Table of ID of M-BUS-2 parameters and these possible values

ID of parameter	Description	Data length	Possible values
4	Confirmed uplinks	1 byte	1 – confirmed 2 – unconfirmed
5	ADR (Adaptive Data Rate)	1 байт	1 – enabled 2 – disabled
8	Uplinks number of transmissions	1 byte	from 1 to 15
16	Communication period	1 byte	1 – 1 hour 2 – 6 hours 3 – 12 hours 4 – 24 hours

			5 – 5 minutes 6 – 15 minutes 7 – 30 minutes
33	External M-BUS device type	1 byte	0 – device type not set 1 – Teplouchet-1 2 – STE 21 «Berill 3 – Danfoss Sonometer_500 4 – ELF_M 5 – Weser 6 – MULTICAL_801 7 – MULTICAL_402 8 – LANDIS_GYR_COMMON 9 – SHARKY_775 10 – PULSAR
49	Data collection period	1 byte	1 – 1 hour 2 – 6 hours 3 – 12 hours 4 – 24 hours 5 – 5 minutes 6 – 15 minutes 7 – 30 minutes
55	Time zone, in minutes	2 bytes	from -720 to 840

## 6 STORAGE AND TRANSPORTATION REQUIREMENTS

The M-BUS-2 converter shall be stored in the original packaging in heated room at temperatures  $+5^{\circ}\text{C}$  to  $+40^{\circ}\text{C}$  and relative humidity less than 85%.

The converter shall be transported in covered freight compartments of all types at any distance at temperatures  $-40^{\circ}\text{C}$  to  $+85^{\circ}\text{C}$ .

## 7 CONTENT OF THE PACKAGE

The M-BUS-2 device is delivered complete with:

Converter M-BUS-2 – 1 pc.

Antenna LoRa – 1 pc.

24-pin bus – 1 pc.

Factory certificate – 1 pc.

## 8 WARRANTY

The warranty period for the device is 5 years from the date of sale.

The manufacturer is obligated to provide repair services or replace the failed device during the entire warranty period.

The consumer undertakes to comply with the terms and conditions of transportation, storage and operation specified in this user manual.

Warranty does not apply to:

- power supplies of devices sending more than 10,000 packets;
- the device with mechanical, electrical and / or other damages and defects caused by violation of the transportation, storage and operation requirements;
- the device with traces of repair performed not by the manufacturer's service center;
- the device with traces of oxidation or other signs of liquids leaking inside the device.

In the event of a warranty claim, contact the service center:

113/1, Kirova Str., Novosibirsk, 630008, Russia.

Tel.: +7 (383) 206-41-35.



[vega-absolute.ru](http://vega-absolute.ru)

Operation Manual © Vega-Absolute OOO 2017-2021